



MONTHLY MEMBERSHIP PROGRESS REPORT

District 14 P

Results as of: 04/30/2018

GMT: CINDY GREGG

LOCATION PENNSYLVANIA

GMT CA

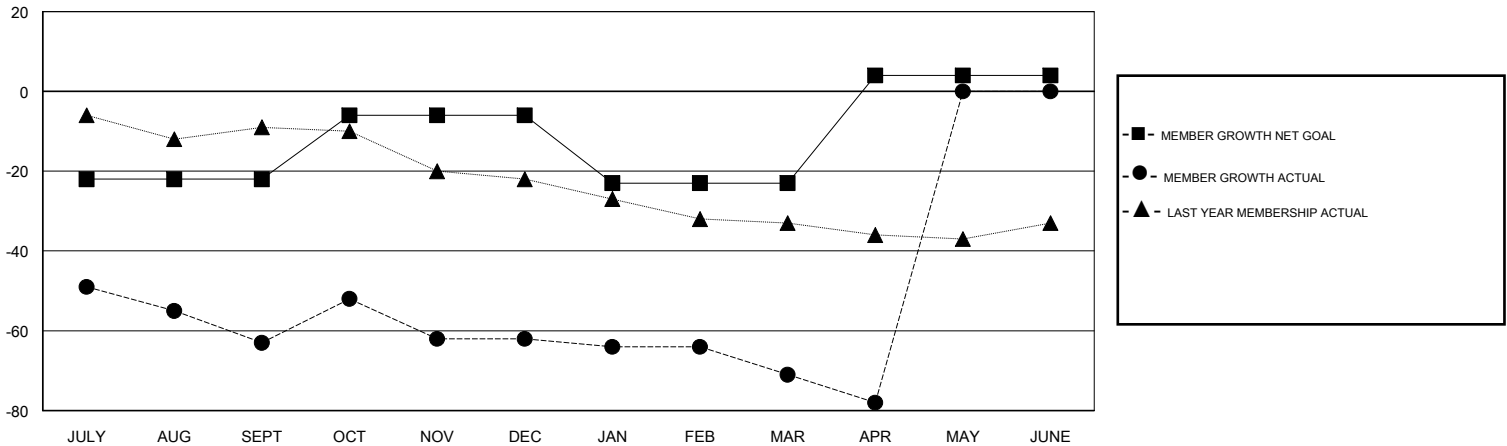
| Clubs | | | |
|-----------------------|---------------|-----------|---------------|
| RESULTS FOR 2017-2018 | | | |
| QUARTER | NEW CLUB GOAL | NEW CLUBS | DROPPED CLUBS |
| JULY/AUG/SEPT | 0 | 0 | 1 |
| OCT/NOV/DEC | 1 | 0 | 1 |
| JAN/FEB/MAR | 0 | 0 | 0 |
| APR/MAY/JUNE | 1 | 0 | 0 |

| Members | | | |
|-----------------------|------------------------|----------------------|--|
| RESULTS FOR 2017-2018 | | | |
| QUARTER | MEMBER GROWTH NET GOAL | MEMBER GROWTH ACTUAL | DROPPED MEMBERS ACTUAL (including transfers) |
| JULY/AUG/SEPT | -22 | 35 | 89 |
| OCT/NOV/DEC | 16 | 25 | 24 |
| JAN/FEB/MAR | -17 | 25 | 32 |
| APR/MAY/JUNE | 27 | 11 | 15 |

GOALS AND ACTUAL NEW CLUBS CUMULATIVE



GOALS AND ACTUAL MEMBERS CUMULATIVE



| | | |
|---|---|--|
| DROPPED CLUBS: 2 | 26 CLUBS OF 44 ADDED 1 OR MORE NEW MEMBERS | <u>GENDER DISTRIBUTION</u> MALE 905 (75.48%) FEMALE 294 (24.52%) Women Percentage Fiscal Year Goal: 25% |
| <u>DROPPED MEMBERS</u> DECEASED 26 CLUB CANCELLED 0 OTHER 134 TOTAL 160 | CLICK HERE FOR CUMULATIVE MEMBERSHIP DATA | TOTAL FAMILY UNIT MEMBERS 240 FAMILY MEMBERS PAYING HALF DUES 122 |